



# NABL

## National Accreditation Board for Testing and Calibration Laboratories

(An Autonomous Body under Department of Science & Technology, Govt. of India)

### CERTIFICATE OF ACCREDITATION

## CHANRE DIAGNOSTIC LABORATORY

has been assessed and accredited in accordance with the standard

**ISO 15189:2012**

"Medical laboratories - Requirements for quality and competence"

for its facilities at

# 121/1, 3<sup>rd</sup> Main, Between 10<sup>th</sup> & 11<sup>th</sup> Cross, Margosa Road, Malleshwaram, Bangalore, Karnataka

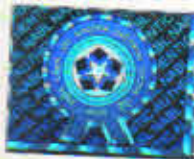
in the field of

**MEDICAL TESTING**

(To see the scope of accreditation of this laboratory, you may also visit NABL website [www.nabl-india.org](http://www.nabl-india.org))

**Certificate Number** M-0260

**Issue Date** 19/11/2016



**Valid Until** 18/11/2018

This certificate remains valid for the Scope of Accreditation as specified in the annexure subject to continued satisfactory compliance to the above standard & the additional requirements of NABL.

Signed for and on behalf of NABL

Dr. Vandana Jain  
Program Manager

Anil Relia  
Director

Prof. S.K. Joshi  
Chairman